

Kyogle Landcare

May Update



Site Visit – Creeks Bend

On Saturday the 27th of April, 7 intrepid explorers ventured to Creeks Bend to Wayne and Susan Somerville's to learn about their ongoing fight against BMAD. (Bell Miner Associated Dieback)

BMAD is a severe form of tree stress caused by insect attack that is having a significant impact in NSW eucalypt forests and is spreading at an alarming rate impacting on biodiversity and the productive capacity of coastal eucalypt forests.



Stage 1: Untreated Forest. Evidence of die back

The Bell miners (sometimes referred to as Bellbirds) are a native honeyeater with a very distinctive “bell like” call. They live in well organised colonies and actively chase out any birds they see as a threat. In eucalypt forests heavily infested by lantana there are often large colonies of Bell miners who nest in the lantana as well as feed on the lerp (from the psyllid insects) Where these over abundant populations of Bell miners occur other birds are driven out and psyllid numbers soar leading to the development of BMAD. Without intervention the death of the forest is inevitable.



Stage 2: Treated forest. Splatter gun used to effect. Lantana is killed and the forest begins to heal.



Stage 3: The effects of using splatter gun technology on Lantana. The under story is able to regenerate, the shade keeps the lantana at bay and the system continues to heal.

Susan and Wayne's efforts to control the BMAD on their property is inspirational. We were taken on a four wheel drive trip to see control sections of the forest in which Lantana is not touched for scientific research purposes. (Stage 1) From here we walked through a site that had recently been treated with the splatter gun technique. (Stage 2) The Lantana was definitely dead and the regen had begun. Noticeably the sounds of the Bell miners were less.

Finally, we walked through a section of the property which had once been wall to wall Lantana (Stage 3) The coolness of the understory submerged us in a myriad of subtle shades of green. Winding our way to the creek the softness of the dappled light changed our perception and we gradually begin to pick out the remnants of some old growth trees standing sentry like guarding the palms, lilies and native trees all the result of natural regeneration. The fecundity of life was awe inspiring. Noticeably the bird song changed from the incessant bell miner call to the sound of parrots and as we climbed out of the forest one observant member of our party noticed koala scratchings on a tree. To the delight of all koala scat was found.

The forest is healing.



In Susan's words, "Nature finds away."

Weed of the Month

Dutchman's Pipe

(*Aristolochia elegans*)

Dutchman's Pipe is a fast growing vine that twines tightly in coils around any supporting structure. It readily invades rainforest habitat. Originally Native to South America and the West Indies, Dutchman's pipe is a fast-growing vine that has been widely promoted as an unusual, easily cultivated ornamental plant and is popular in gardens.



Dutchman's Pipe looks similar to native plants that are used by native butterflies for feeding and egg-laying. However, it is poisonous to butterfly larvae that hatch and feed on its leaves. The survival of the rare Richmond birdwing butterfly *Ornithoptera richmondia* is threatened by Dutchman's pipe.



To physically remove, pull or dig out small plants, ensuring crowns and roots are removed. Cut down vigorous growth with brush hook or similar tool, preferably before seeds set. Remove all parts of plant from soil.

For more information: [Dutchman's Pipe Fact Sheet](#)

Success

We have received \$1000 grant from the **Kyogle Healthy Towns Challenge**. This grant will be used to undertake a planting along the recently completed restoration works near the Amphitheatre. More information on how you can participate coming soon.

Grant Alert

The following grants are currently available.

My Community Project

Funding Provider: Department of Premier and Cabinet (NSW)

Amount: \$20,000 - \$200,000

Closes: 15th May 2019

[Click here](#) for more details.

Tackling Tough Times

Funding Provider: Numerous

Amount: Up to \$ to \$15000

Closing date: Ongoing

[Click here](#) for more information

IGA Community Chest

Funding provider: IGA Supermarkets

Amount: Various

Closing date: Ongoing

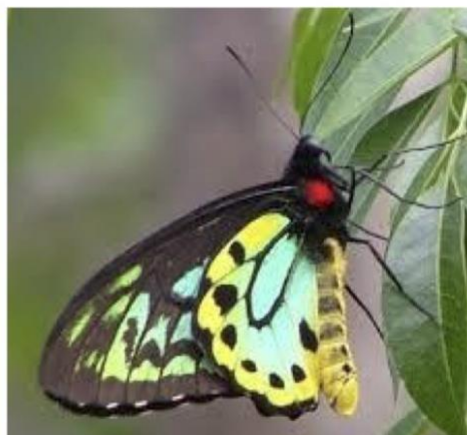
[Click here](#) for more information



Keep the date Free!

Open Day

Plant Sale and Work
Shops



Saturday 4th May. Landcare Nursery. 9 – 1pm.

Alcorn Park (next to tennis courts)

9 – 10.30	10.30 - 11	11 – 12	12 – 12.30	12.30 -1
Plant	Koala Talk	Fawcett's Creek	Birdwing	Wires
Propagation		Guided Walk	Butterfly	Workshop
Workshop			Workshop	

Morning Tea: Scones and tea or coffee for a gold coin donation.

Kids Activities: Face painting and art

[Kyogle Landcare](#)

email: shazfaulkner@yahoo.com
email: robdrury3@gmail.com

Phone: 0423923311
Phone: 0437866911